

Car Lift Accessories

SKU# 5175801

3,000-lb. Capacity / Telescoping Boat Trailer Tongue Platform

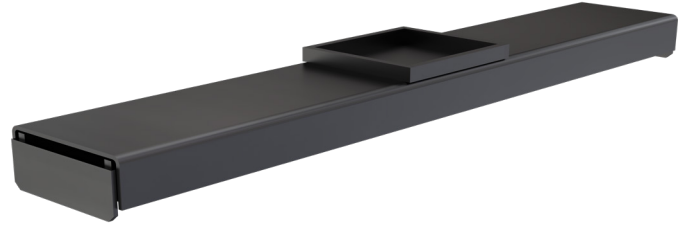
Questions? Contact BendPak's Sales Team

sales@bendpak.com | 1-800-253-2363

Monday - Friday, 7AM to 4:30PM PST

Boat Trailer Tongue Platform

The one-of-a-kind TC-3000 telescoping boat trailer tongue platform offers a safe and simple way to get a boat trailer on your [HD-7500BLX four-post lift](#). Here's how it works. The tongue platform extends 20" from 48" to 68" between the runways on a BendPak HD-7500BLX or any four-post lift that has a minimum center of runway width of 48". This rugged and secure platform tool then slides breezily between the posts. This sliding action is similar to that of our 4-post bridge jacks. No bolts or cumbersome installation procedures required!



The front wheel of your boat trailer fits securely into the wheel tray, so it won't slip around as you load the trailer. The two back wheels of your trailer simple glide onto the runways. Once secured on the car lift, lifting and lowering your boat trailer is just a matter of operating the lift like you would if a car or truck were loaded.

No one but BendPak has anything like this. But lucky for you, the telescoping design of the TC-3000 means it works on other four-post lifts too! The versatility of this simple yet extremely effective tool makes it the ideal gift for boat lovers. It's an affordable way to entirely convert your lift into a nautical-lifting dream machine.

Features

- Multi-stage, telescoping platform
- Rugged stainless steel design
- Fits BendPak HD-7500BLX and other four-post lifts with a minimum runway center width of at least 48" or greater.

Specifications

Extended length 68" (1,727 mm)

Collapsed length 48" (1,219 mm)

Travel 20" (508 mm)

Wheel tray depth 1" (25 mm)

Width 8" (203 mm)

Height 4-2/3" (119 mm)

Shipping weight 70-lbs. (31 kg)

Shipping dimensions 49" x 10" x 5"