

# Wide Frame Cradle Pads



**BendPak®**

## Car Lift Accessories

SKU# 5215848

Frame Cradle Pad / 60 mm Pin / Fits Wide Frames / Set of 2

Questions? Contact BendPak's Sales Team

sales@bendpak.com | 1-800-253-2363

Monday - Friday, 7AM to 4:30PM PST

## Wide Frame Cradle Pads are Perfect for Trucks & SUVs

BendPak's wide frame cradle pads are a necessity for any lifting of heavy-duty commercial-grade trucks on a two-post lift. Since this frame cradle pad is an ALI Certified two-post lift accessory, you'll feel comfortable knowing it's been over-designed to handle heavy-duty projects. Attaching easily to the arms of any BendPak two-post lift, the frame cradle pads straddle your vehicles chassis frame, holding it firmly in place to prevent movement. These wide frame cradle pads handle chassis frames up to 5.25 inches width, and only a set of two should be necessary in the front where the frame sections converge.

While the frame cradle pads secure your frame, the polyurethane rubber pad protects from any damage to your hardware and further reduces any chance of movement. These pads have a textured surface which provides that extra grip for additional stability, and its thick rubber construction takes on heavy abuse.

## Features

- Installs easily to BendPak two-post lift arms
- Sturdy steel construction
- Tactile rubber pad reduces slippage and protects finish
- Fits wide frames up to 5.25"
- Made for heavy-duty commercial-grade trucks

## Specifications

**Channel Width:** 5.25" (133 mm)

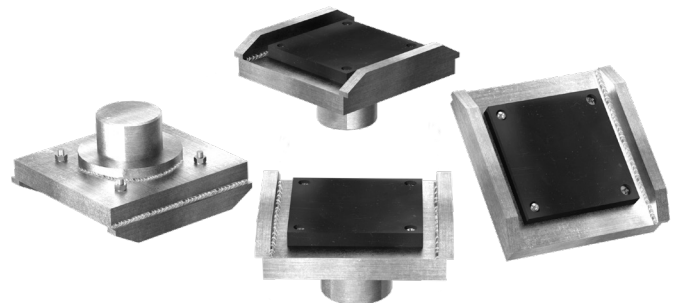
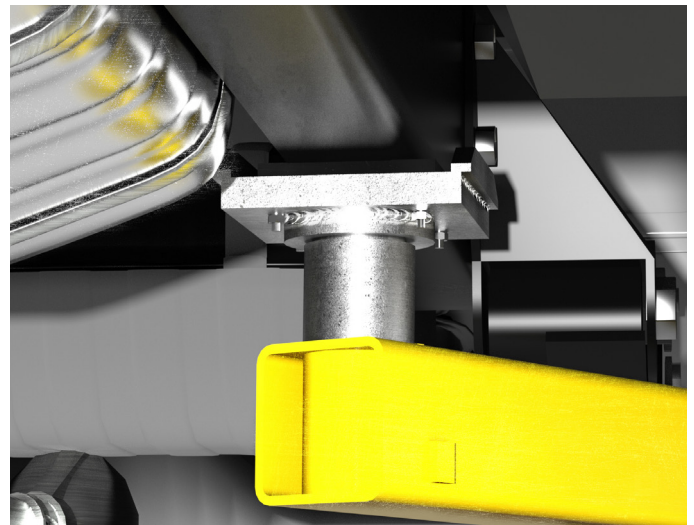
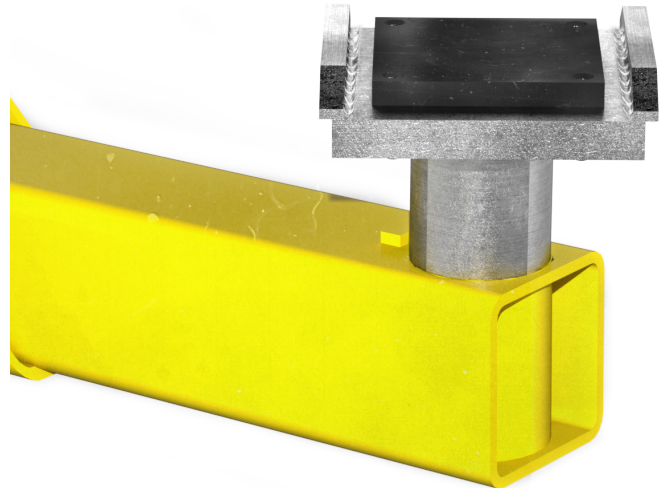
**Overall Width:** 6.25" (159 mm)

**Overall Length:** 6.125" (156 mm)

**Overall Height:** 3.25" (83 mm)

**Pad Dimensions:** 4.25" x 4.25" (108 mm x 108 mm)

**Pin Diameter:** 60 mm



**BendPak®**



1645 Lemonwood Dr, Santa Paula, CA 93060

© 2022 BendPak Inc. All rights reserved.