

WB-CB66-VE Wheel Balancer

The CB66-VE Wheel Balancer is a highly accurate & reliable wheel balancing system designed to accommodate large rims up to 28" in diameter and overall wheel diameters up to 44". A 40mm Balancing Shaft provides incredible durability, while the exclusive Laser & Light feature illuminates the inside of the wheel at the unbalanced weight position, for convenient & precise wheel weight applications. The CB66-VE also comes standard with Multi-Mode Balancing options, along with Power Saving Mode, while allowing the user to choose between 5 Standard & 2 ALU Smart balancing configurations. A high performance balancer at a unbeatable value!!

WB-CB-66-VE
Wheel Balancer



Specifications

- | | |
|--------------------------|--------------------|
| • Data Entry: | Keypad |
| • Max Wheel Diameter: | 44" |
| • Rim Width: | 1.5" - 20" |
| • Rim Diameter: | 8" - 28" |
| • Wheel Weight Capacity: | 150 lbs. |
| • Accuracy: | 1 gram |
| • Power: | 110VAC/60HZ |
| • Balancing Time (Sec): | 5 to 7secs |
| • RPM: | 140 |
| • Ship Weight: | 352 lbs. |

Standard Accessories

- 50g Weight
- Weight Hammer / Application Tool
- Wheel Caliper
- Clamp Bowl / Bowl Edge
- Cone Sets – Small, Medium & Large sizes
- Speed-Nut Assembly





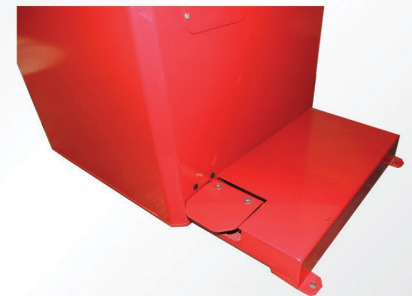
User friendly
LED Touch Panel Keypad



Convenient
Speed-Nut Mounting



Exclusive!
Laser & Light Indicators
for unbalanced weight position



Foot Pedal Braking System for
accurate weight applications

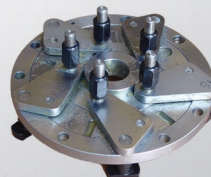
Feature List

- 1. User Friendly Operation** - LED, touch-panel Keypad with easy to read icons assisting operators utilizing all balancing functions.
- 2. Large Rim Diameter Balancing** - able to balance up to 28" Rim diameter & 44" overall Wheel Diameter.
- 3. Multi-Mode Vehicle Balancing** - standard with SUV, Car & Motorcycle balancing modes.
- 4. Low-RPM Operation** - at 140 RPM, the balancer's life is further extended for sensitive electronics & moving components, all while providing highly accurate wheel balancing.
- 5. Ease-Of-Use** - with manual measurement input for distance & diameter with 5 ALU Standard modes and 2 ALU Smart modes.
- 6. Exclusive Laser Indicator** - lights up automatically at the unbalance weight position under ALUS mode in the 6 o'clock wheel position.
- 7. Integrated Measurement Acquisition Wand** - allows for ease of acquiring measurement data with a retractable, stylish measuring tool, integrated into the machine.
- 8. Light Indicator** - illuminates inside of wheel automatically at the unbalanced weight position, for improved wheel weight applications.
- 9. Foot Pedal Braking System** - conveniently secures the wheel in the unbalanced position to accurately apply balance wheel weights.
- 10. Extra Long, Heavy Duty Balancing Shaft** - the 12" long, 40mm diameter balancing shaft accommodates wide range of wheels, including unique aftermarket wheels of different sizes & shapes.
- 11. Speed-Nut Mounting** - the Speed-Nut allows for quick & efficient wheel mounting, easily securing the wheel to the spindle with convenient lead-in screw.
- 12. Multi Pocket Wheel Weight Shelf** - 14 articulated pockets, over 1.5" deep, allowing plenty of storage for weights & tooling.
- 13. Large Wheel Shroud** - the large 38" wheel hood prevents debris from flying off the tire while in use.
- 14. Power Saving Mode** - automatically puts machine in stand-by mode after 5 minutes of non-usage.

CB6 Series / Optional Accessories



WB-CB6-MCAK-16
Motorcycle Adaptor Kit 16mm-34mm



WB-B-W-07
40mm, Universal Adaptor Plate -
Hole Dia. 95mm-280mm



WB-CB6-LTCS
Light Truck Cone Set (40mm)