



OPERATING INSTRUCTIONS

SAFETY INSTRUCTIONS

- ★ Never overload jack. Capacity of Jack is listed on the capacity label as well as nameplate. Exceeding capacity is dangerous and may cause damage to jack, lift and injury. Do not exceed stated capacity.
- ★ Be watchful of pinch points on jack & lift; keep extremities out of these areas to avoid injury.
- ★ Do not place fingers or hands in, on, around, or near moving components while jack is attached to air supply.
- ★ Never allow untrained or unauthorized personnel to operate jack.
- ★ Fully train all employees on the proper use and care of jack.

OPERATING INSTRUCTIONS

Before operating jack, it is necessary to fully read and understand this instruction packet, & the safety instructions. It is also recommended to dry run the jack before lifting a vehicle to become familiar with its operation and to help bleed off air lines.

While avoiding any pinch points, follow instructions below to lift a vehicle ensuring that capacity of jack is not exceeded:

1. Roll jack into position below vehicle, pull slides out to align with manufacturer's recommended pickup points. Extension risers may be stacked & used as needed to eliminate clearance to lift points.
2. Ensure a minimum 12" of clearance above vehicle to nearest overhead obstruction. Failure to do so can lead to vehicle damage, building damage, jack damage, and personal injury. **DO NOT** lift if clearance is less than 12".
3. To lift vehicle, ensure air supply (60-100psi at 20-30cfm) is connected & depress both black mushroom buttons (marked "RAISE") on the front side of the jack simultaneously. Continue lifting until jack stops. Slowly lower vehicle using the yellow ("LOWER") button until lock is engaged. **DO NOT** work on any vehicle if lock is not engaged.
4. To lower vehicle, "RAISE" jack to maximum height. Rotate "LOCK RELEASE" handle counterclockwise until locks are clear of mechanism. While holding handle in place, press the yellow "LOWER" button located on the front of the jack at the bottom in the middle. Keep all body parts clear of jack until jack is in its lowest position.
5. Remove any extension risers and replace in storage location.
6. Move jack(s) to the front of the lift.
7. Lower lift and drive vehicle off.



!! WARNING !!

DO NOT disable or override the built in safety measures. Serious injury, property damage, or death may result.



!! CAUTION !!

DO NOT operate jack until a visual inspection of all moving components has been completed.



MAINTENANCE INSTRUCTIONS

To avoid personal injury and damage to jack, permit only qualified personnel to perform maintenance on jack(s). If you are not completely familiar with general automotive lift maintenance procedures, stop and contact manufacturer for instructions.

DAILY:

- ★ Inspect & repair or replace all loose bolts & damaged or broken components.
- ★ Inspect Jack adapters for excessive wear or damage & replace as needed.
- ★ Inspect air system for leaks and basic function.
- ★ Inspect linkage rods, handles, buttons, and springs for damage and wear, replace as needed.
- ★ Inspect extension risers for any defects. If defects are present, discontinue use of that riser & replace parts as needed.
- ★ Inspect lock mechanism for any defects. If defects are present, discontinue use immediately & replace parts as needed.

MONTHLY:

- ★ Inspect wheels & roller assemblies for damage, wear & tear, and dirt and debris in mechanism. Clean, lubricate, repair & replace components as needed.
- ★ Clean Jack & inspect for rust.

SEMI-ANNUALLY:

- ★ Lubricate lock mechanism & inspect for damage and wear. Replace at first sign of damage.
- ★ Check for accumulated fluid in control housing.

EVERY 2 YEARS:

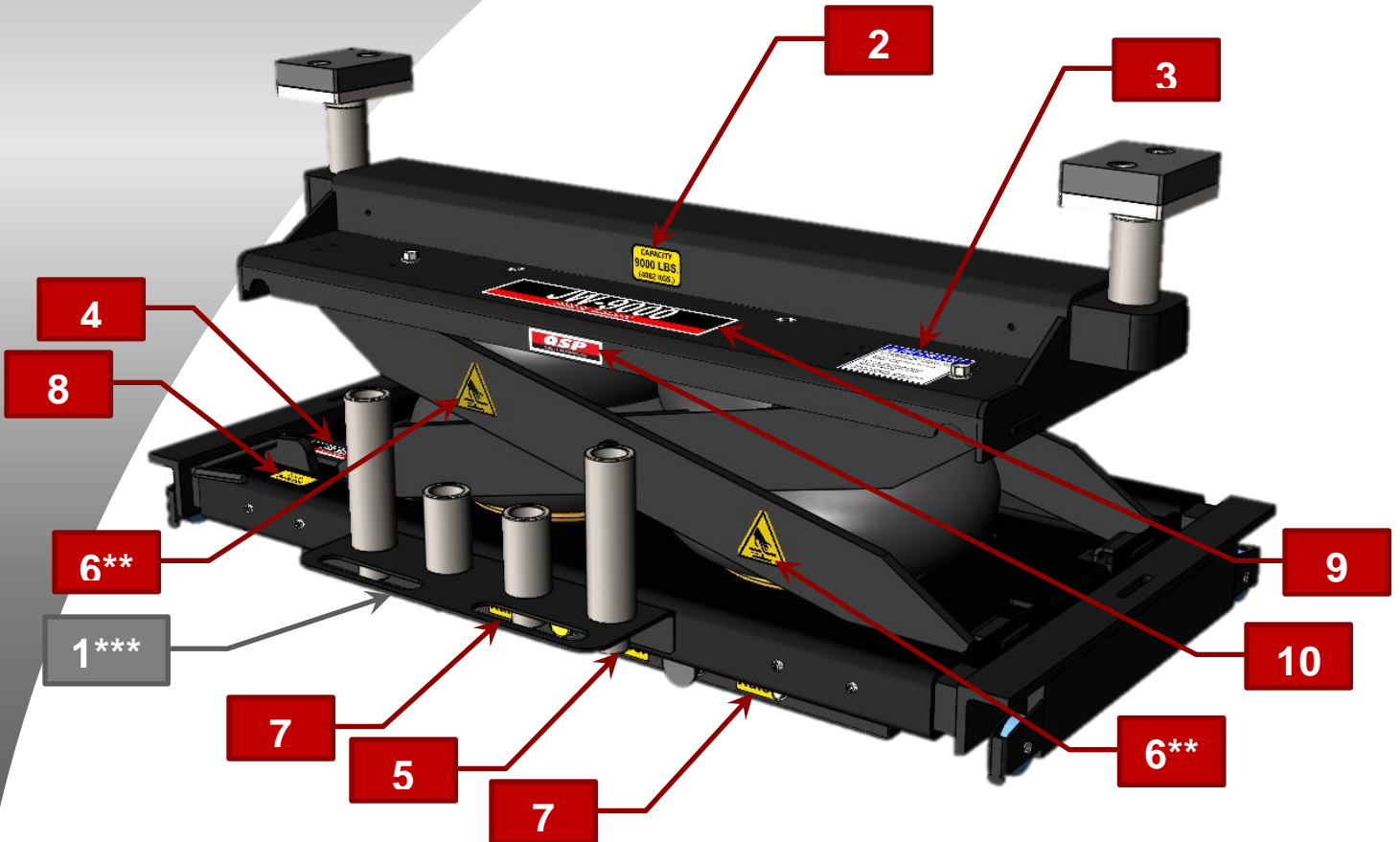
- ★ Disassemble upper crossmember, inspect air bags & inside channels not visible during regular use.
- ★ Lubricate pivot points and sliding assemblies as needed.
- ★ Check all labels on jack for legibility & make sure no labels are missing. Replace as needed.

TROUBLESHOOTING

SYMPTOM	PROBLEM	FIX
Jack will not start when black buttons are simultaneously pushed.	<ol style="list-style-type: none"> 1. Leak in air bag 2. Plugged air filter 3. Water in control system 	Repair / replace air bag Replace air filter Drain & repair system, replace components if needed
Jack starts, but stalls while lifting.	<ol style="list-style-type: none"> 4. Restricted or kinked air line 5. Leak in air line 6. Insufficient air supply 	Locate & correct restriction Locate & repair leak <i>Correct supply (60-100psi, 20-30cfm)</i>
Jack moves, but stops completely when contacting load.	<ol style="list-style-type: none"> 1. Jack loaded beyond capacity 2. Air bag leakage 3. Insufficient air pressure 	Use jack only to documented capacity Check pneumatic system & replace as needed Increase pressure, DO NOT exceed 100psi
Jack is slow to lower, or does not lower at all.	<ol style="list-style-type: none"> 1. Jack locking latch engaged 2. Lock release mechanism damaged or missing parts 3. Restricted or kinked air line 	Disengage lock via latch Repair parts & replace missing parts Locate & correct restriction
Jack rises in jerking fashion	<ol style="list-style-type: none"> 1. Water in system 	Drain & repair system, replace components if needed

LABEL LOCATION DIAGRAM & REPLACEMENT GUIDE

Prior to the application of any label be sure to thoroughly clean and prepare the surface with rubbing alcohol.



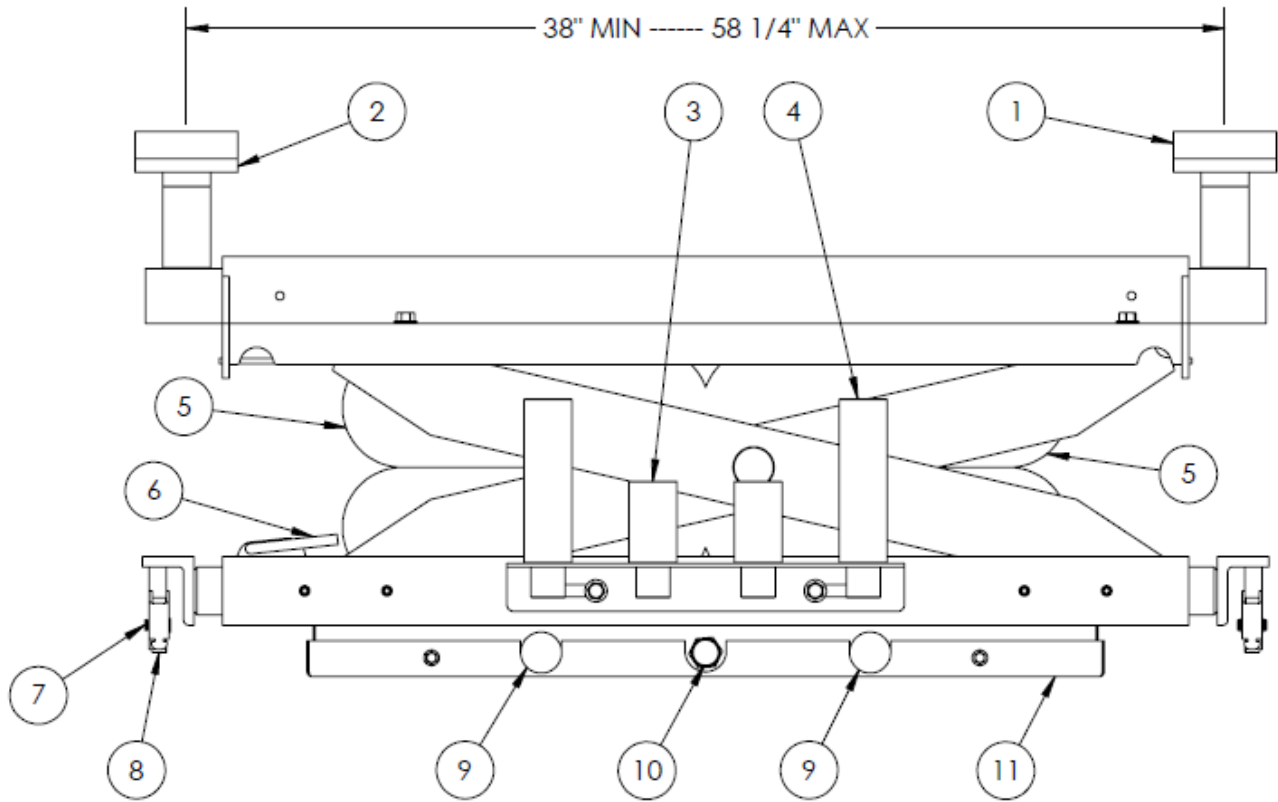
#	DESCRIPTION	QTY
1	AIR INLET INFORMATION DECAL***	1
2	CAPACITY LABEL	1
3	IMPORTANT NOTICE LABEL	1
4	LIFT PART NUMBER & SERIAL NUMBER NAMEPLATE**	1
5	LOWER DECAL	1
6	PINCH WARNING DECAL	4
7	RAISE DECAL	2
8	LOCK RELEASE DECAL	1
9	LARGE MODEL NUMBER DECAL	1
10	QSP LOGO DECAL	1

****ADDITIONAL LABELS (2) LOCATED ON BACK OF DEVICE**

*****LABEL LOCATED ON BACK OF DEVICE AT BOTTOM**

Labels for this device are sold as a label kit, manufacturer part number JW-9000-10.

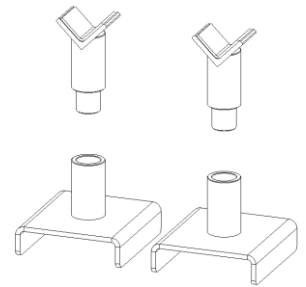
REPLACEMENT PART DIAGRAM & PART NUMBER GUIDE



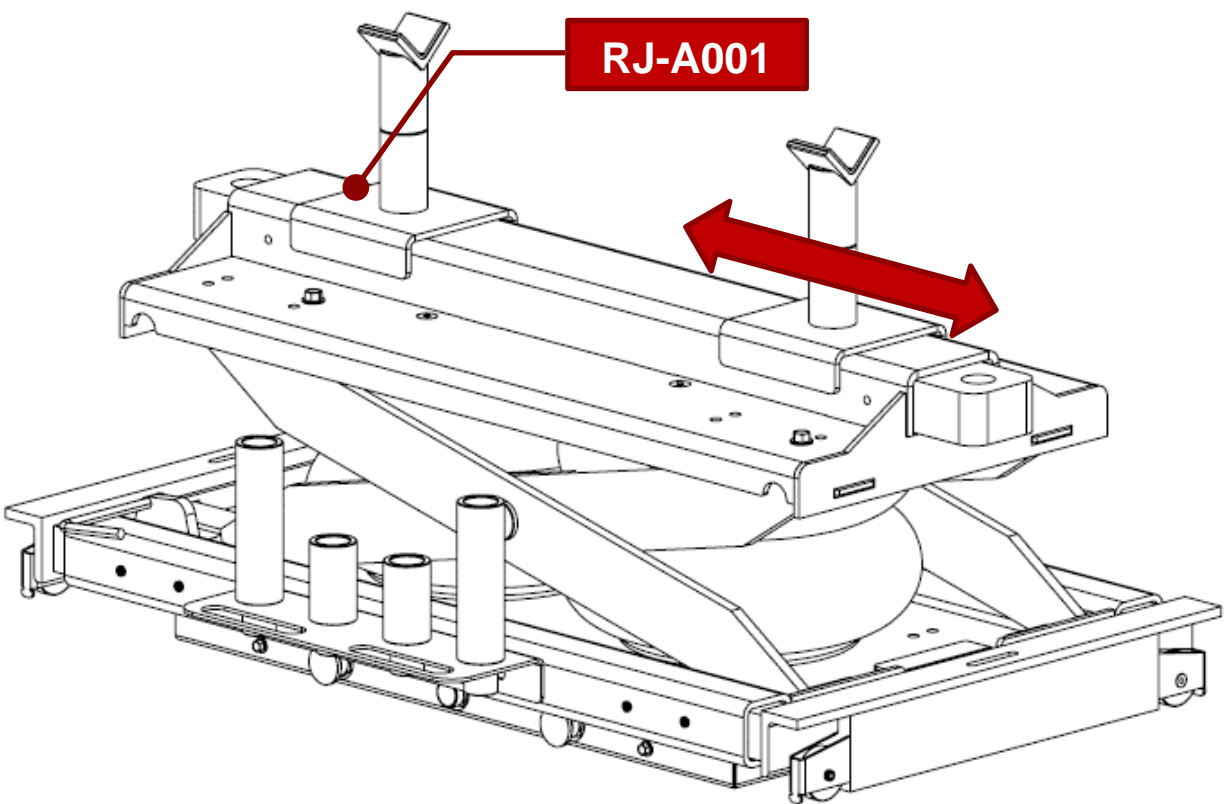
#	PART#	DESCRIPTION	QTY
1	QSP05M	RUBBER PAD – DRILLED	2
2	JW-8500-523	LIFT PAD WELDMENT	2
3	JW-8500-520	3" POST	2
4	JW-8500-519	6" POST	2
5	JW-9000-518	AIR BAG	2
6	JW-8500-529	LOCK RELEASE HANDLE	1
7	SB700004	AXLE FOR BLUE WHEEL	4
8	203-208-3	BLUE OUTRIGGER WHEEL	4
9	PC-4M-BK	BLACK BUTTON	2
10	PC-4M-YL	YELLOW BUTTON	1
11	JW-8500-512	CONTROL BOX COVER	1

OPTIONAL LIFTING ACCESSORY PACKAGE

Optional lifting accessory kit (PN: RJ-A001) is a kit of parts designed to allow the use of your JW-9000 jack to lift axles, support engines or transmissions, or to lift vehicles from optional lift points that are inside the width of the runways on your jack. The kit contains: (2) bridge brackets & (2) axle supports with adhesive rubber pads.



OPTIONAL LIFTING ACCESSORY INSTRUCTIONS



OPERATING INSTRUCTIONS

To use lifting cradles to support engines, axles, or other vehicle components, ensure that the vehicle is securely supported on runways prior to setup.

1. Remove standard lifting pads from arms of Jack.
2. Install cradles on top of uppermost crossmember.
3. Install lifting pad or "V" to match lift point.
4. Slide cradles in/out to desired lift point.
5. Raise/lower jack normally.

WARRANTY INFORMATION

Your Air Bag Jack has been thoroughly tested and is guaranteed for a period of 12 months from the date of delivery. Under the terms of this guarantee, all components which are proven to be defective within the warranty period will be repaired or replaced free of charge. Our technical service assistance is the sole authority in determining whether or not defects come under the coverage of the guarantee. The guarantee excludes all responsibility on the part of Quality Stainless Products (QSP) for direct or indirect loss or damage to persons or things deriving from incorrect operation or servicing of this product. This guarantee is limited to defects in materials, workmanship and assembly, and excludes all components subject to normal wear. Furthermore, the guarantee excludes return shipping of defective part(s) to QSP. QSP will however ship the replacement part by standard ground service at no charge.

Parts Department 888-473-5378

TYPE: Air Bag Jack

MODEL: JW-9000

Serial Number:

Please retain this document for reference when calling Technical Assistance.